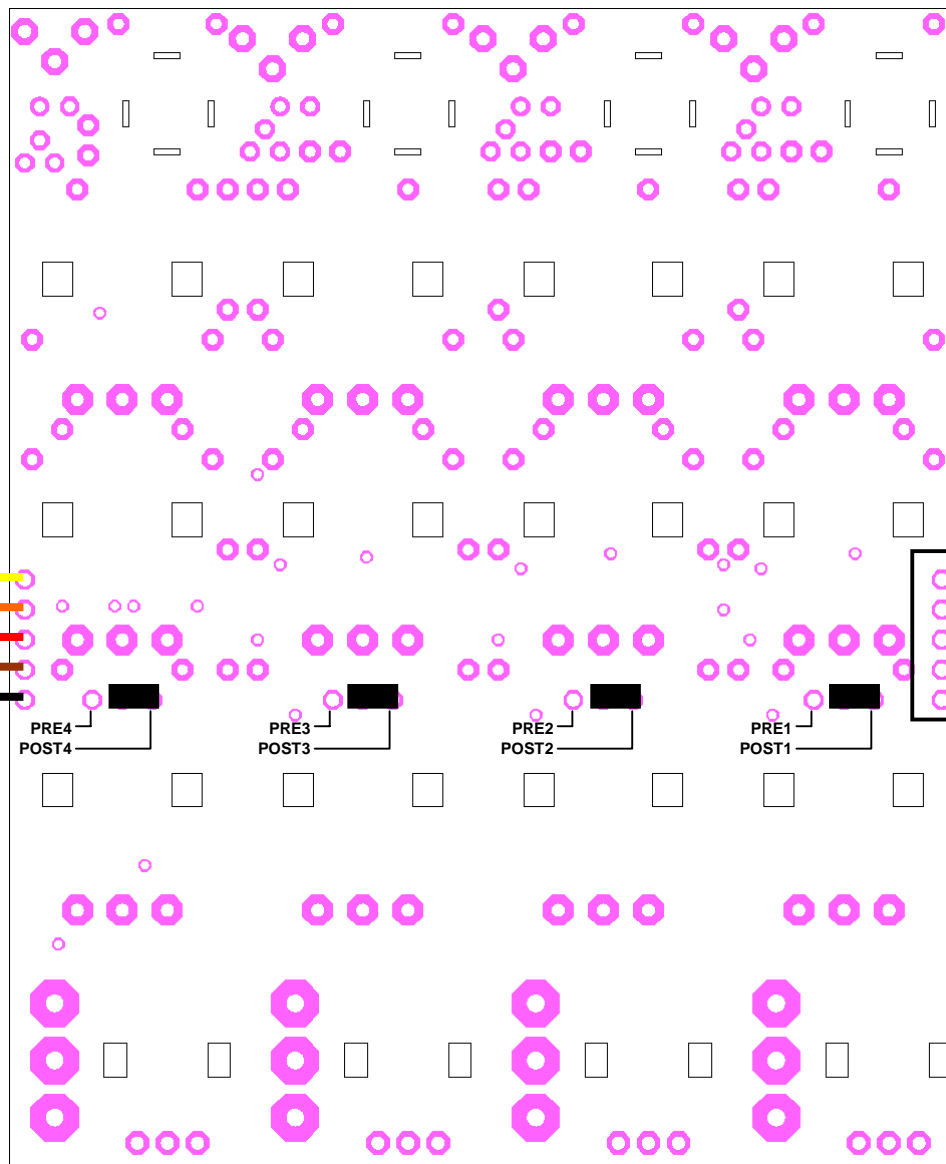


A-138p Performance Mixer Input Version 1

**Position and function of the trimming potentiometers, jumpers and connectors
(pcb bottom view)**

**Position und Funktion der Trimpotentiometer, Jumper und Steckverbinder
(Ansicht von unten auf die Leiterplatte)**

signal display adjustment (trimming potentiometers)

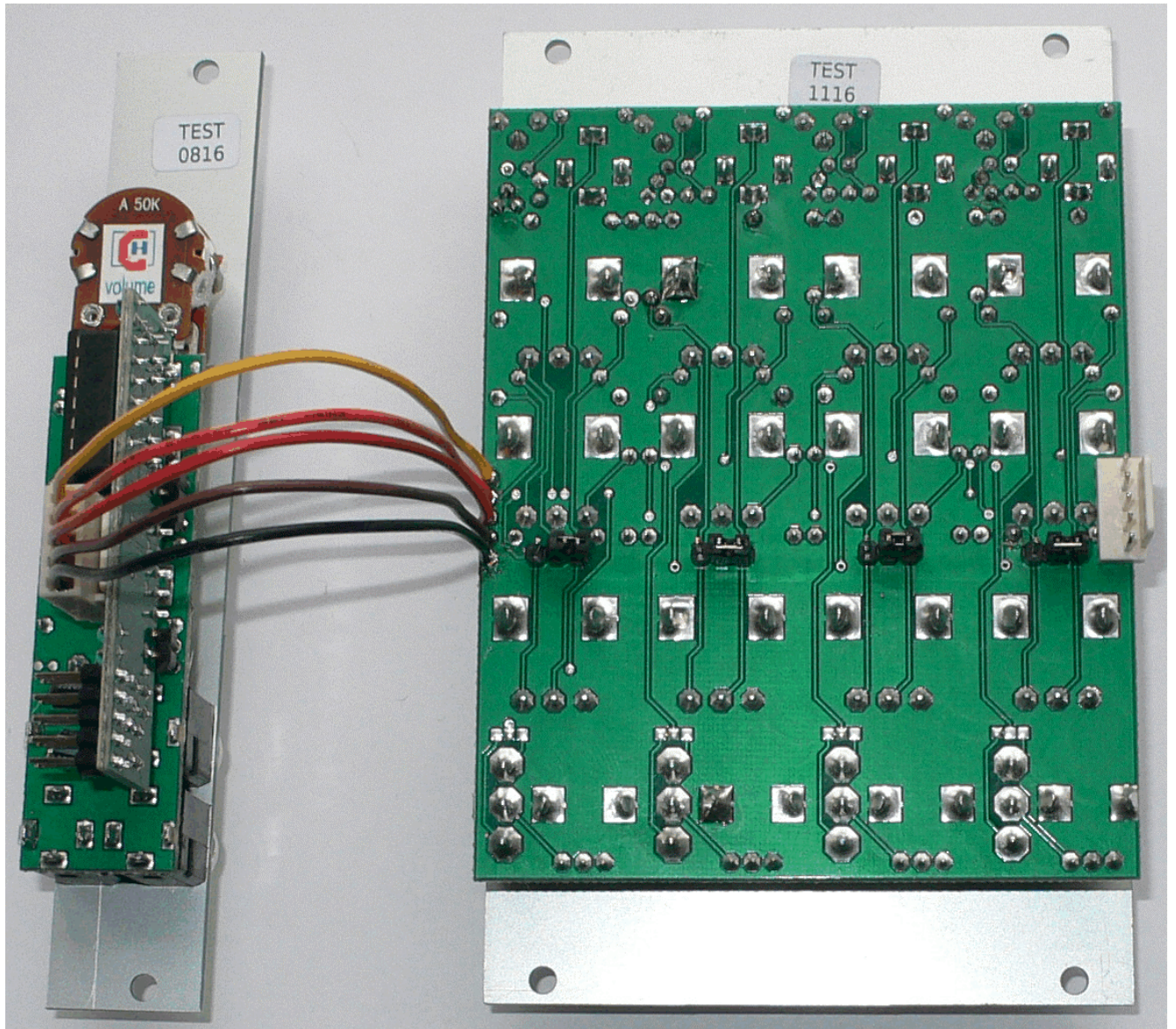


pre/post jumpers for Aux
left = pre main level
right = post main level

to preceding A-138p
or A-135-4A

to A-138o
or to next A-138p
or to A-135-4A

Picture of connected A-138o and A-128p



A-138p Performance Mixer Input

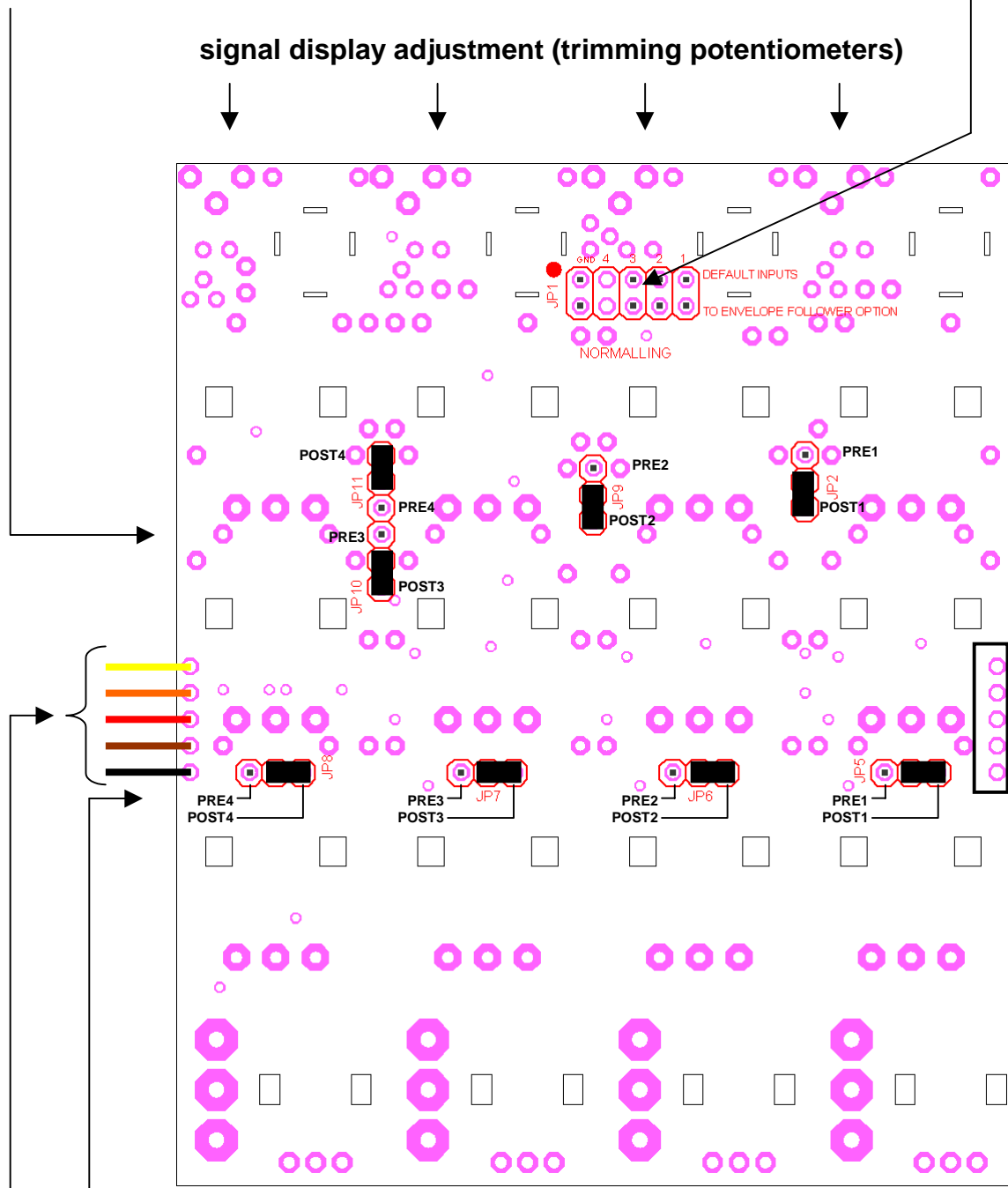
Version 2

Position and function of the trimming potentiometers, jumpers and connectors
(pcb bottom view)

Position und Funktion der Trimpotentiometer, Jumper und Steckverbinder
(Ansicht von unten auf die Leiterplatte)

pre/post jumpers for normalling
option to A-135-4C

internal normalling option to A-135-4C
red dot = red wire of ribbon cable



pre/post jumpers for Aux
left = pre main level
right = post main level

to preceding A-138p
or A-135-4A

to A-138o
or to next A-138p
or to A-135-4A